



Independent assessment & therapy services for children & adolescents

# Spider Therapy

## The TheraSuit<sup>®</sup> Method - for children with Cerebral Palsy

While there is no cure for cerebral palsy, every day more and more treatments and therapies for children who suffer from this condition and other neurological defects are introduced around the world.

One of the latest treatments is a special therapy known as "Spider" therapy, which may help children with cerebral palsy learn to walk on their own.

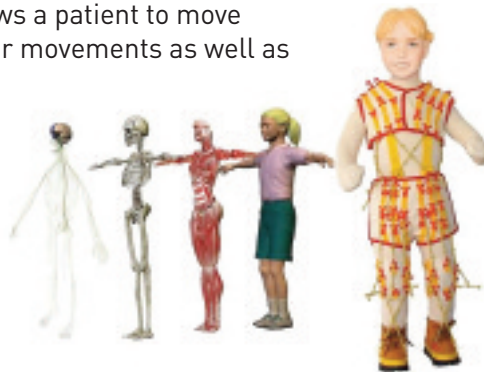
Cerebral palsy is a group of disorders caused by severe damage to the brain that affects movement and posture. Many children with cerebral palsy suffer from spasticity (stiffness) in their joints, namely their legs, and have difficulty walking on their own.

### How Spider Therapy works

The "Spider" involves attaching a number of different elastic cords (with different elasticity) to specific points on one end of a patient's body to different points on the other end.

This special suspension device allows a patient to move independently while controlling their movements as well as strengthening parts of the body affected by their condition.

Spider therapy is an intensive form of treatment and usually requires five-days-a-week, three to four-hour-a-day sessions for three to four weeks.



### THE BENEFITS OF TheraSuit<sup>®</sup> & TheraSuit Method<sup>™</sup>

TheraSuit Method<sup>™</sup> for children with cerebral palsy works to align the body in order to correct posture and movement patterns. By essentially forcing its wearer to move properly, it provides the following benefits:

- Properly aligns the body
- Improves muscle tone
- Retrains the nervous system to help facilitate more regular body movement
- Improves body awareness
- Utilises, but supports weak muscles until they are developed
- Improves gross motor skills
- Improves balance
- Strengthens body

By wearing a TheraSuit<sup>™</sup>, walking, posture, standing, and positional maintenance may be significantly improved.

The "Spider" can be combined with conventional therapy methods and can be successfully combined with most of rehabilitation and sport equipment. Therapists argue that the "Spider" makes treatment more effective since it can substitute for the hands of two or three physical therapists and allows a more full use of the child's strength and abilities.

### Treatment protocols at Therapy In Praxis

Therapy In Praxis provides individualised and goal-oriented treatment for each child, and the clinic currently offers consultations with other paediatric specialists.

#### DISCLAIMER

New knowledge, theory and practice within sensory processing, sensory integration and neurodevelopment are ongoing. The therapists of Therapy In Praxis take responsibility for their theoretical and practical knowledge in their treatment, planning and programming for the children they serve. Therapy In Praxis is not responsible for any injuries arising out of the use or misuse of activities and materials presented in this programme. It will fall to those involved to be aware of any physical limitations, which might contraindicate use with individual children.

### THERAPY IN PRAXIS LIMITED

The Old Stables & Granary, Barnby Farm, Bossall, York, North Yorkshire YO60 7NS  
Tel: 01904 468855 Email: [info@tipltd.co.uk](mailto:info@tipltd.co.uk) Website: [www.therapyinpraxis.co.uk](http://www.therapyinpraxis.co.uk)





# How to find us

## BY ROAD

### Travelling from the East

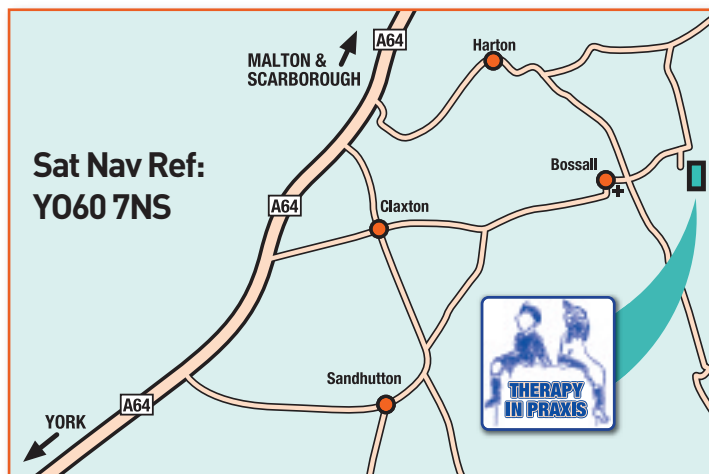
Leave A64 West on LHS sign posted Claxton, Stamford Bridge  
 Travel 0.5 miles  
 Turn first left on to (Kirk Balk Lane), sign posted Bossall  
 Travel 1.5 miles to Bossall church  
 With the church on your RHS travel 0.5 miles  
 Therapy in Praxis is on your RHS

### Travelling from the South & West

Leave A1M North at junction 45 and join A64 East (York, Scarborough)  
 Travel for 18.5 miles, at roundabout straight on A64 (Scarborough)  
 Travel for 4.0 miles on A64  
 Leave A64 RHS sign posted Claxton, Bossall  
 Travel 0.7 miles along (Whinny Lane)  
 At the cross roads go straight on (Kirk Balk Lane), sign posted Bossall  
 Travel 1.5 miles to Bossall church  
 With the church on your RHS travel 0.5 miles  
 Therapy in Praxis is on your RHS

### Travelling from the North

Leave A19 and join A64 East (York, Scarborough)  
 Travel for 5.6 miles, at roundabout straight on A64 (Scarborough)  
 Travel for 4.0 miles on A64  
 Leave A64 RHS sign posted Claxton, Bossall  
 Travel 0.7 miles along (Whinny Lane)  
 At the cross roads go straight on (Kirk Balk Lane), sign posted Bossall  
 Travel 1.5 miles to Bossall church  
 With the church on your RHS travel 0.5 miles  
 Therapy in Praxis is on your RHS



When travelling to TIP LTD from either direction via A64. Should you miss your turning for Claxton continue for 1 mile, take the next exit and follow the directions from the opposite approach. Should you wish to use satellite navigation to find TIP LTD our post code is: **YO60 7NS**.

## BY RAIL

The nearest Train Stations are MALTON and YORK. We suggest you take a taxi from one of these stations, giving the driver our address and postcode.

## THERAPY IN PRAXIS LIMITED

The Old Stables & Granary, Barnby House Farm, Bossall, York, North Yorkshire YO60 7NS  
 Tel: 01904 468855 Email: [info@tipltd.co.uk](mailto:info@tipltd.co.uk) Website: [www.therapyinpraxis.co.uk](http://www.therapyinpraxis.co.uk)